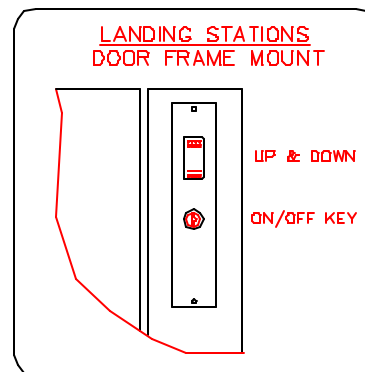
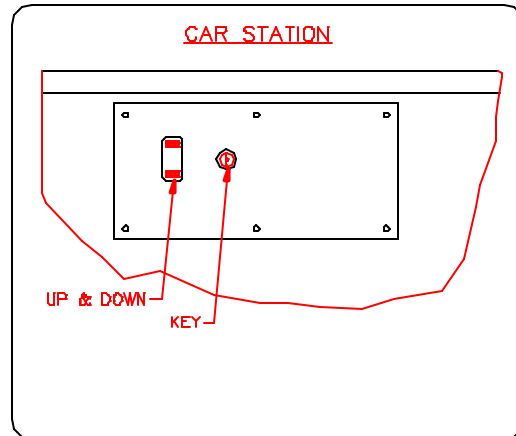


a	b
48"	103"
60"	115"
72"	127"
96"	151"
108"	163"
120"	175"
144"	199"
168"	223"

TRANSVERSAL SECTION -AA- ELEVATOR'S RUNWAY



PIT SWITCH REQUIRED

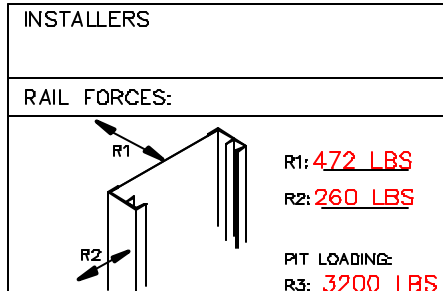
GENERAL SPECIFICATIONS:

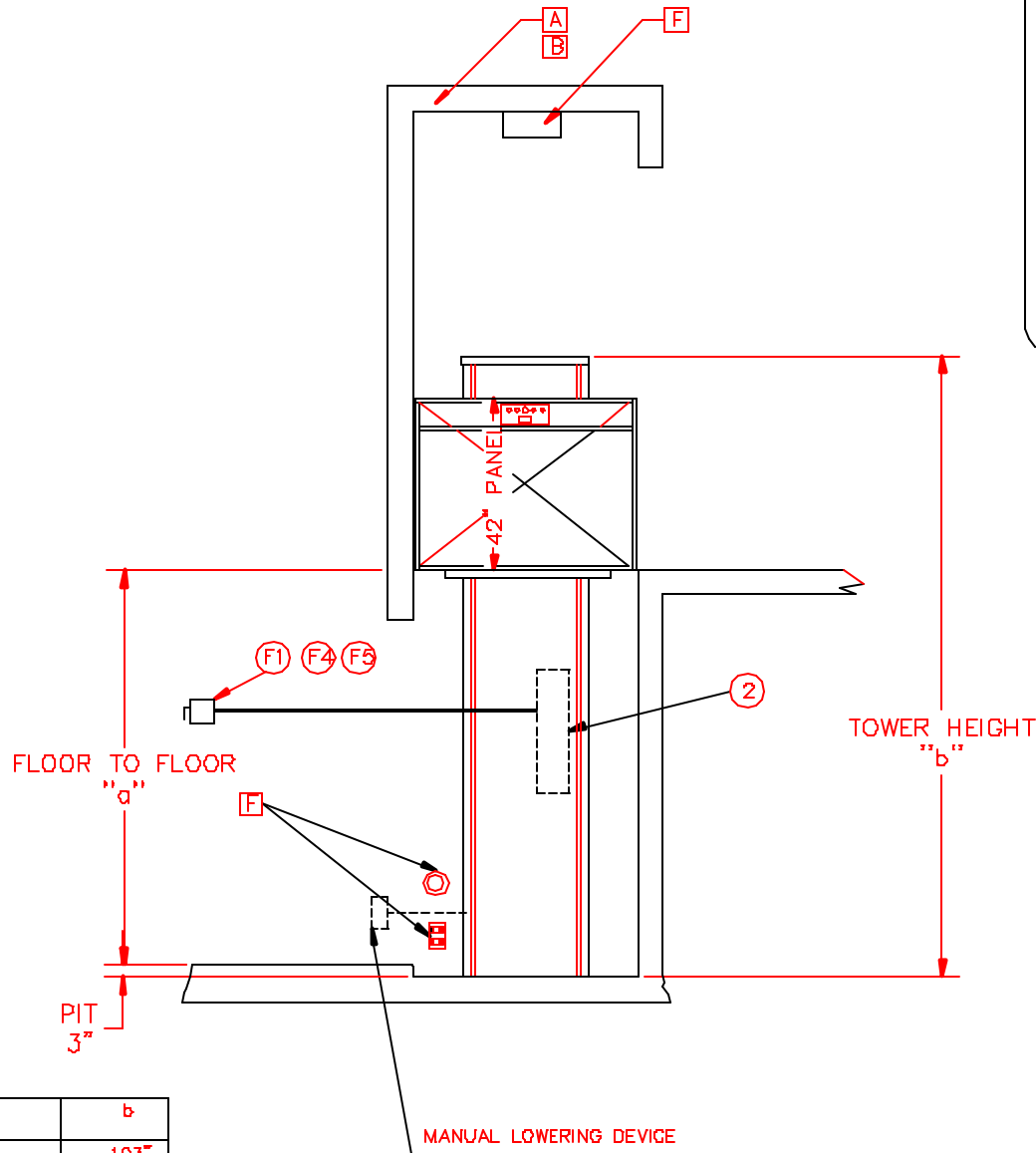
- COLOR BEIGE STANDARD FOR INDOOR APPLICATION
- HYDRAULIC PUMP 110 VAC OPERATION (110 VAC UP/12 VDC DOWN)

PROVISIONS BY OTHERS

- A - HOISTWAY IN ACCORDANCE WITH ELEVATOR/LIFT SAFETY CODES (U.S.-ASME A17.1 PART XX / CAN.-CSA B355-94) AND TO LOCAL CODES AND REGULATIONS. HOISTWAY TO BE FIRE RATED IN ACCORDANCE WITH APPLICABLE BUILDING CODES IF REQUIRED BY SUCH CODES.
 - B - PLUMB HOISTWAY DUE TO CLOSE RUNNING CLEARANCES OWNER/AGENT MUST ASSURE THAT HOISTWAY IS CONSTRUCTED PLUMB ($\pm 1/8$ IN.) AND SQUARE AND TO SIZE SHOWN.
 - C - PIT WATER PROOFING OR SUMP AS REQUIRED. PIT FLOOR DESIGNED FOR REACTION SHOWN.
 - D - NO CONDUIT, WIRING OR PIPING OTHER THAN THAT PERTAINING TO THE LIFT EQUIP. IS PERMITTED IN THE HOISTWAY
- STRUCTURAL ENGINEER TO ASSURE THAT BUILDING AND SHAFT WILL SUPPORT ALL LOADS IMPOSED BY THE LIFT EQUIPMENT.
- F - ELECTRICAL EQUIPMENT AND WIRING TO COMPLY WITH SECTION 38 OF CSA C22.1. ARTICLE 620 OF NATIONAL ELECTRIC CODE ANSI/NFPA 70
 - FUSED DISCONNECT WITH AUXILIARY CONTACT ON MAIN POWER SUPPLY. PROVIDE TWO 18 AWG CONDUCTORS BETWEEN CONTACT AND CONTROLLER.
 - LIGHTING WITH SWITCH AND ELECTRICAL GFCI OUTLET IN HOISTWAY PIT.
 - BRANCH CIRCUIT WITH DISCONNECT FOR DOOR OPERATORS (IF EQUIPPED).
 - BRANCH CIRCUIT WITH DISCONNECT FOR VENTILATION SYSTEM (IF EQUIPPED).

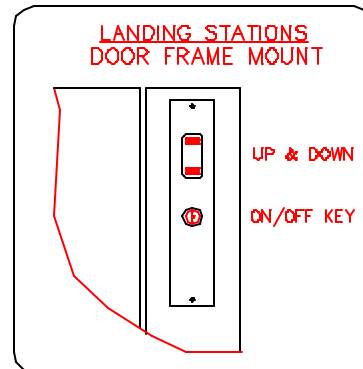
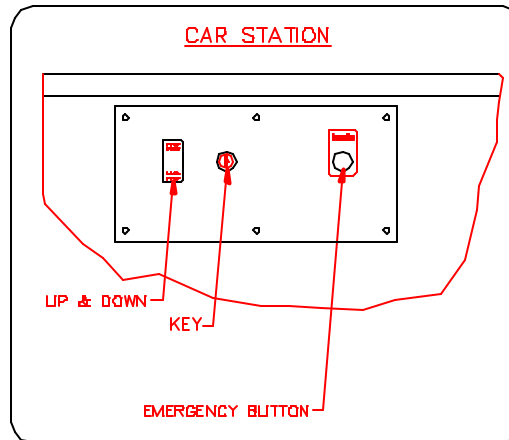
ELECTRICAL DATA				
	AMPERAGE	VOLTAGE	PHASE	REQUIRED
POWER SUPPLY	20	120	1	1
HYDRAULIC DATA				
MOTOR:	1.5 H.P.	PLUNGER -	± 1.5" THK: FULL	
SYSTEM MAX. PRES.:	2000 PSI	CYLINDER	# 2"	THK 0.125"
FLOW:	1.48 GPM	CHAIN	# 50	QTY 2
OIL CAP.:	1.25 GAL	SPROCKETS:	TEE 15	P.D. 3.00"
WEIGHT/PLUNGER:	2125 LBS			
GENERAL DATA				
CAPACITY:	750 LB	SPEED:	UP: 25 ft/m DOWN: 25ft/m	
LANDING:	2	OPENINGS:	ON/OFF SAME SIDE	
TRAVEL:	X"	PIT DEPTH:	3"	
INSTALLERS	PROJECT:			
	MODEL: V1504P QTY.: 1			
RAIL FORCES:	TOLERANCES IF NOT SPECIFIED			
	DEC: ---- ANG: ----			
	SCALE:	DRAWN BY:	NO.	REVISIONS
	NTS	XXX		DATE
	MATERIAL:	DATE:		
	----	AA/MM/JJ		
	DRAWING #	REV#	PAGE:	TITLE:
	----	0	1/2	LIFT FOR HANDICAPPED





a	b
48"	103"
60"	115"
72"	127"
96"	151"
108"	163"
120"	175"
144"	199"
168"	223"

TRANSVERSAL SECTION -AA- ELEVATOR'S RUNWAY



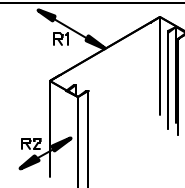
PIT SWITCH REQUIRED

GENERAL SPECIFICATIONS:

- COLOR BEIGE STANDARD FOR INDOOR APPLICATION
- HYDRAULIC PLUMP 110 VAC OPERATION (110 VAC UP/12 VDC DOWN)

INSTALLER: XXXXXXX

RAIL FORCES GENERATED BY PLATFORM LOADS ONLY



R1: 472 LBS

R2: 260 LBS

PIT LOADING:
R3: 3200 LBS

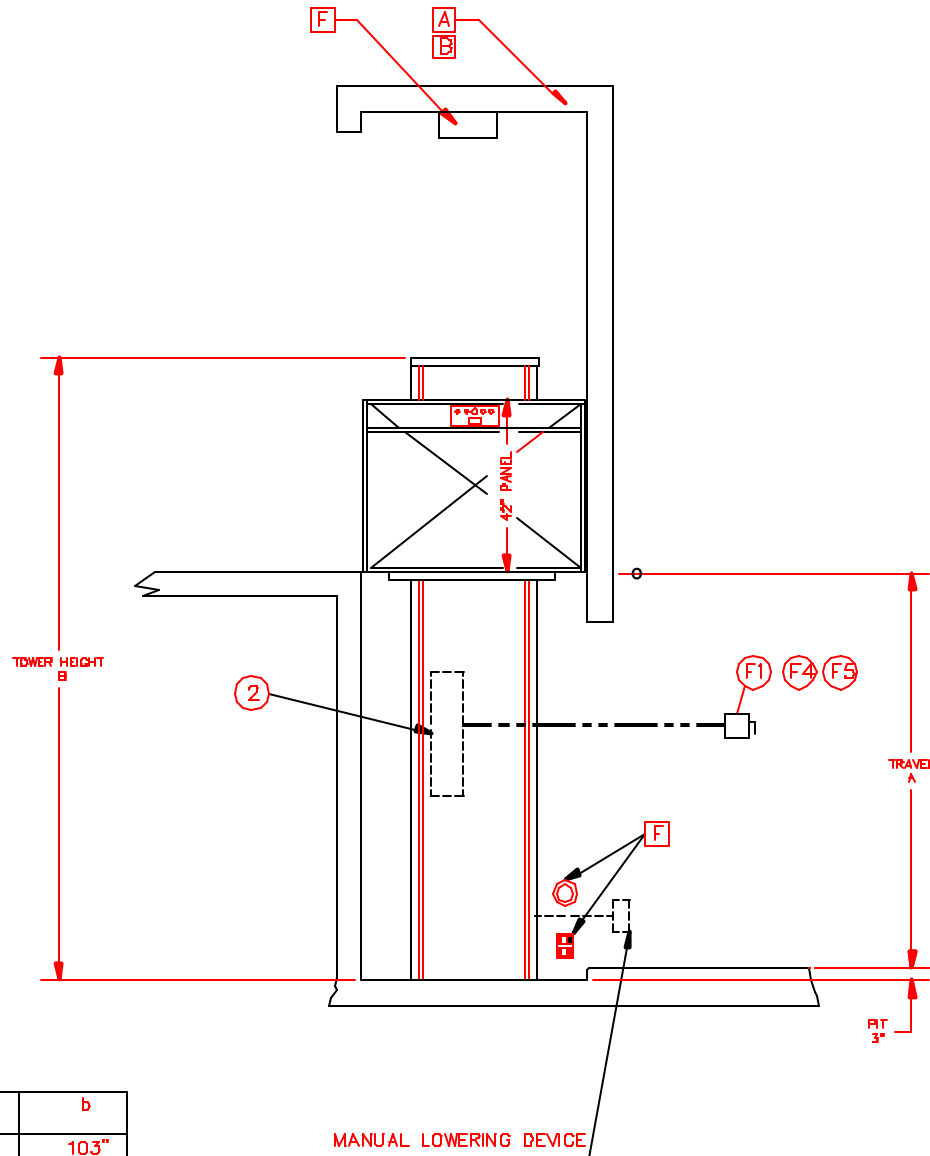
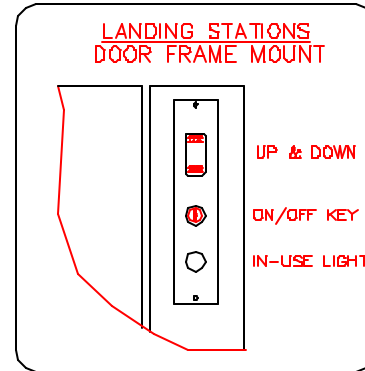
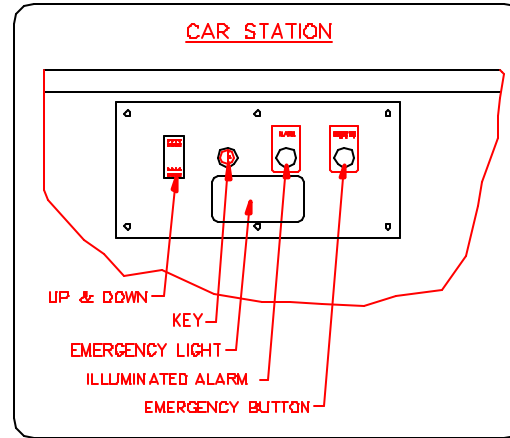
PROVISIONS BY OTHERS

- A - HOISTWAY IN ACCORDANCE WITH ELEVATOR/LIFT SAFETY CODES (U.S.-ASME A17.1 PART XX / CAN.-CSA B355-94) AND TO LOCAL CODES AND REGULATIONS. HOISTWAY TO BE FIRE RATED IN ACCORDANCE WITH APPLICABLE BUILDING CODES IF REQUIRED BY SUCH CODES.
 - B - PLUMB HOISTWAY DUE TO CLOSE RUNNING CLEARANCES OWNER/AGENT MUST ASSURE THAT HOISTWAY IS CONSTRUCTED PLUMB ($\pm 1/8$ IN.) AND SQUARE AND TO SIZE SHOWN.
 - C - PIT WATER PROOFING OR SUMP AS REQUIRED. PIT FLOOR DESIGNED FOR REACTION SHOWN.
 - D - NO CONDUIT, WIRING OR PIPING OTHER THAN THAT PERTAINING TO THE LIFT EQUIP. IS PERMITTED IN THE HOISTWAY
- STRUCTURAL ENGINEER TO ASSURE THAT BUILDING AND SHAFT WILL SUPPORT ALL LOADS IMPOSED BY THE LIFT EQUIPMENT.
- F - ELECTRICAL EQUIPMENT AND WIRING TO COMPLY WITH SECTION 38 OF CSA C22.1, ARTICLE 620 OF NATIONAL ELECTRIC CODE ANSI/NFPA 70
 - FUSED DISCONNECT WITH AUXILIARY CONTACT ON MAIN POWER SUPPLY. PROVIDE TWO 18 AWG CONDUCTORS BETWEEN CONTACT AND CONTROLLER.
 - LIGHTING WITH SWITCH AND ELECTRICAL GFCI OUTLET IN HOISTWAY PIT.
 - BRANCH CIRCUIT WITH DISCONNECT FOR DOOR OPERATORS (IF EQUIPPED).
 - BRANCH CIRCUIT WITH DISCONNECT FOR VENTILATION SYSTEM (IF EQUIPPED).

ELECTRICAL DATA				
	AMPERAGE	VOLTAGE	PHASE	REQUIRED
POWER SUPPLY	20	120	1	1
HYDRAULIC DATA				
MOTOR:	1.5 H.P.	PLUNGER - $\pm 1.5"$ THK:	FULL	
SYSTEM MAX. PRES.:	2000 PSI	CYLINDER	# 2"	THK 0.125"
FLOW:	1.48 GPM	CHAIN	# 50	QTY 2
OIL CAP.:	1.25 GAL	PULLEYS	TEE	P.D.
WEIGHT/PLUNGER:	2125 LBS			
GENERAL DATA				
CAPACITY:	750 LB	SPEED:	UP: 25 ft/m DOWN: 25ft/m	
LANDING:	2	OPENINGS:	FRONT/BACK	
TRAVEL:	X"	PIT DEPTH:	3"	
PROJECT:				
MODEL: V1504P	QTY.:	1		
TOLERANCES IF NOT SPECIFIED				
DEC: ----	ANG: ----			
SCALE: NTS	DRAWN BY: XXX	NO.	REVISIONS	DATE
MATERIAL: ----	DATE: AA/MM/dd			
DRAWING # ----	REV# 0 PAGE: 1/2			

PROVISIONS BY OTHERS

- A - HOISTWAY IN ACCORDANCE WITH ELEVATOR/LIFT SAFETY CODES (U.S.-ASME A17.1 PART XX / CAN.-CSA B355-94) AND TO LOCAL CODES AND REGULATIONS. HOISTWAY TO BE FIRE RATED IN ACCORDANCE WITH APPLICABLE BUILDING CODES IF REQUIRED BY SUCH CODES.
 - B - PLUMB HOISTWAY DUE TO CLOSE RUNNING CLEARANCES OWNER/AGENT MUST ASSURE THAT HOISTWAY IS CONSTRUCTED PLUMB ($\pm 1/8$ IN.) AND SQUARE AND TO SIZE SHOWN.
 - C - PIT WATER PROOFING OR SUMP AS REQUIRED. PIT FLOOR DESIGNED FOR REACTION SHOWN.
 - D - NO CONDUIT, WIRING OR PIPING OTHER THAN THAT PERTAINING TO THE LIFT EQUIP. IS PERMITTED IN THE HOISTWAY.
- STRUCTURAL ENGINEER TO ASSURE THAT BUILDING AND SHAFT WILL SUPPORT ALL LOADS IMPOSED BY THE LIFT EQUIPMENT.
- F - ELECTRICAL EQUIPMENT AND WIRING TO COMPLY WITH SECTION 38 OF CSA C22.1. ARTICLE 620 OF NATIONAL ELECTRIC CODE ANSI/NFPA 70
 - 1) FUSED DISCONNECT WITH AUXILIARY CONTACT ON MAIN POWER SUPPLY. PROVIDE TWO 18 AWG CONDUCTORS BETWEEN CONTACT AND CONTROLLER.
 - 3) LIGHTING WITH SWITCH AND ELECTRICAL GFCI OUTLET IN HOISTWAY PIT.
 - 4) BRANCH CIRCUIT WITH DISCONNECT FOR DOOR OPERATORS (IF EQUIPPED).
 - 5) BRANCH CIRCUIT WITH DISCONNECT FOR VENTILATION SYSTEM (IF EQUIPPED).



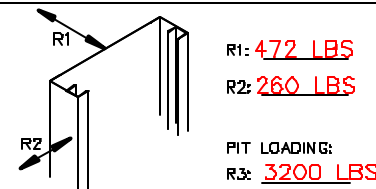
PIT SWITCH REQUIRED

GENERAL SPECIFICATIONS:

- 1) COLOR BEIGE STANDARD FOR INDOOR APPLICATION
- 2) HYDRAULIC PUMP 110 VAC OPERATION (110 VAC UP/12 VDC DOWN)

INSTALLER: XXXXXXX

RAIL FORCES GENERATED BY PLATFORM LOADS ONLY

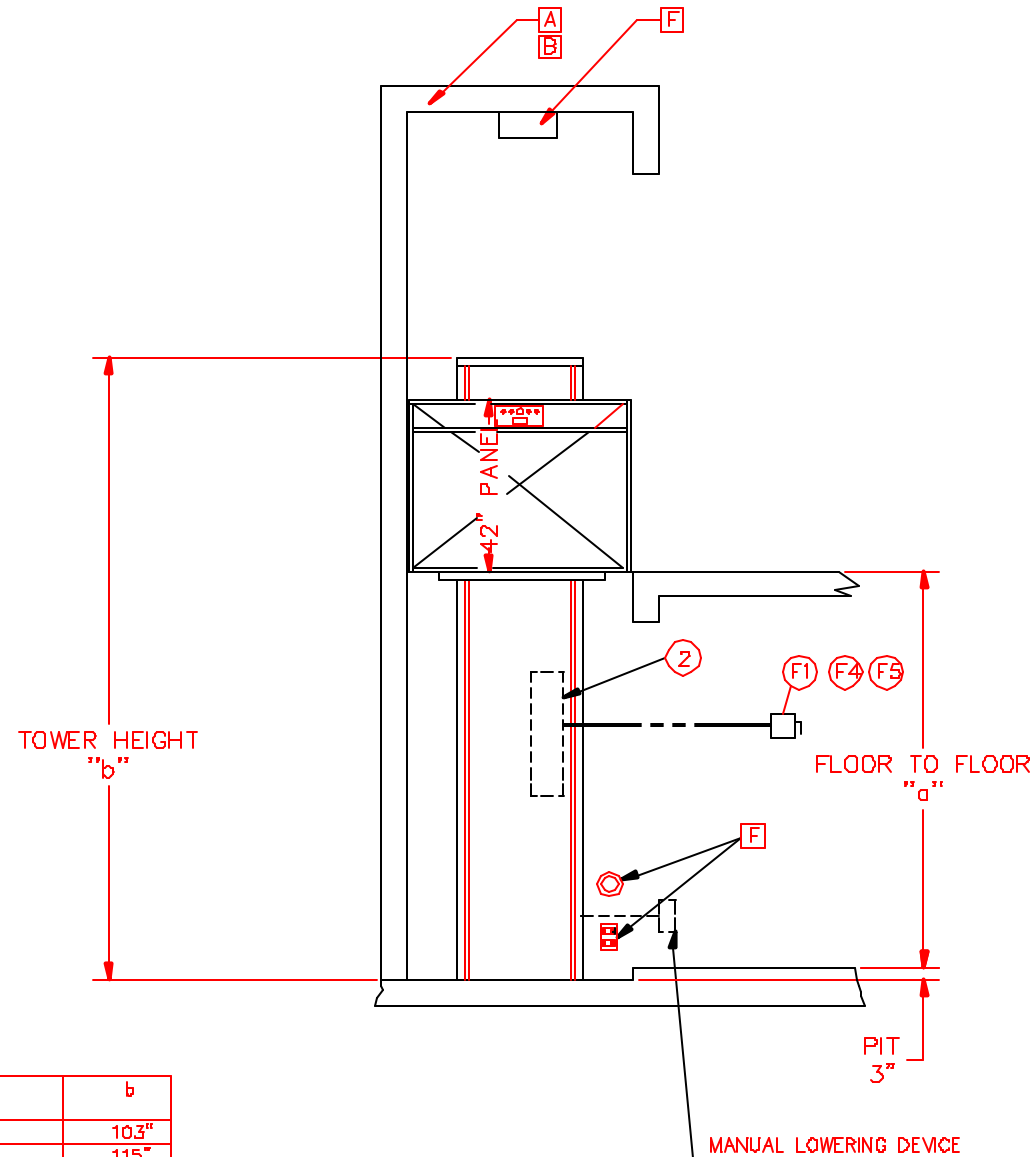


ELECTRICAL DATA				
	AMPERAGE	VOLTAGE	PHASE	REQUIRED
POWER SUPPLY	20	120	1	1
HYDRAULIC DATA				
MOTOR:	1.5 H.P.	PLUNGER -	± 1.5" THK: FULL	
SYSTEM MAX. PRES.:	2000 PSI	CYLINDER	# 2"	THK 0.125"
FLOW:	1.48 GPM	CHAIN	# 50	QTY 2
OIL CAP.:	1.25 GAL	PULLEYS:	TEE	P.D.
WEIGHT/PLUNGER:	2125 LBS			
GENERAL DATA				
CAPACITY:	750 LB	SPEED:	UP: 25 ft/m DOWN: 25ft/m	
LANDING:	2	OPENINGS:	FRONT/BACK	
TRAVEL:	X"	PIT DEPTH:	3"	
PROJECT:				
MODEL:	V1504P	QTY.:	1	
TOLERANCES IF NOT SPECIFIED				
DEC: ----		ANG: ----		
SCALE:	NTS	DRAWN BY:	NO.	REVISIONS
		XXX		DATE
MATERIAL:	----	DATE:		
		AA/MM/dd		
DRAWING #	REV#	PAGE:	TITLE:	
----	0	1/2	LIFT FOR HANDICAPPED	

a	b
48"	103"
60"	115"
72"	127"
96"	151"
108"	163"
120"	175"
144"	199"
168"	223"

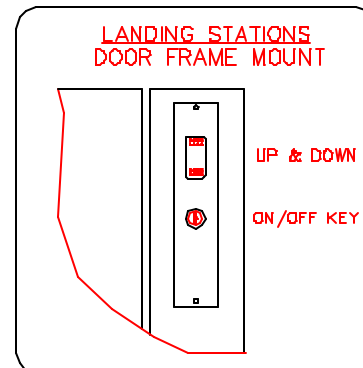
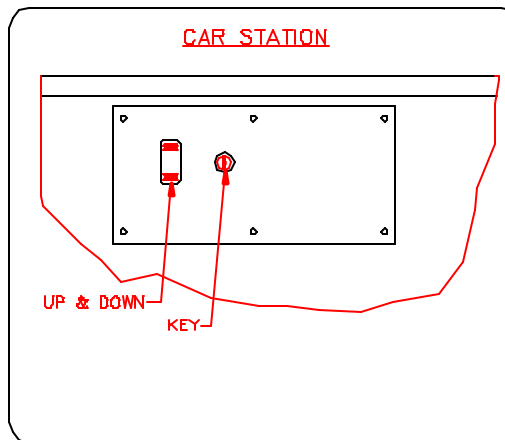
TRANSVERSAL SECTION -AA- ELEVATOR'S RUNWAY

MANUAL LOWERING DEVICE



a	b
48"	103"
60"	115"
72"	127"
96"	151"
108"	163"
120"	175"
144"	199"
168"	223"

TRANSVERSAL SECTION -AA- ELEVATOR'S RUNWAY



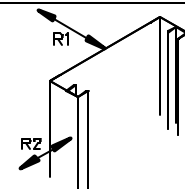
PIT SWITCH REQUIRED

GENERAL SPECIFICATIONS:

- 1) COLOR BEIGE STANDARD FOR INDOOR APPLICATION
- 2) HYDRAULIC PUMP 110 VAC OPERATION (110 VAC UP/12 VDC DOWN)

INSTALLER: XXXXXXX

RAIL FORCES GENERATED BY PLATFORM LOADS ONLY



R1: 472 LBS

R2: 260 LBS

PIT LOADING:
R3: 3200 LBS

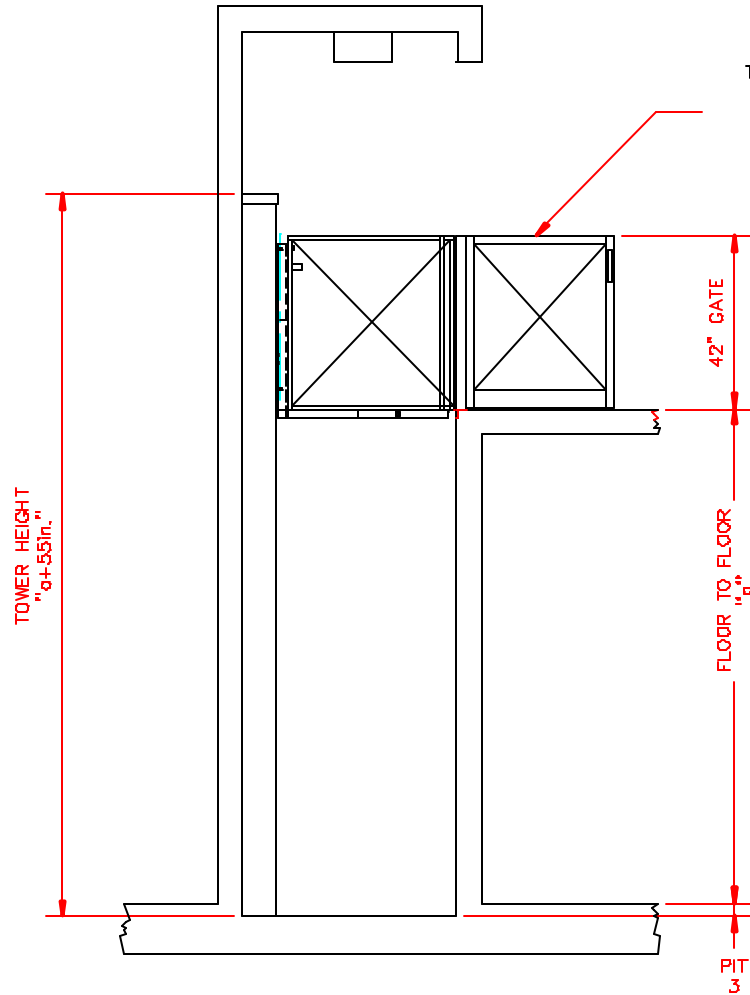
PROVISIONS BY OTHERS

- A - HOISTWAY IN ACCORDANCE WITH ELEVATOR/LIFT SAFETY CODES (U.S.-ASME A17.1 PART XX / CAN.-CSA B355-94) AND TO LOCAL CODES AND REGULATIONS. HOISTWAY TO BE FIRE RATED IN ACCORDANCE WITH APPLICABLE BUILDING CODES IF REQUIRED BY SUCH CODES.
 - B - PLUMB HOISTWAY DUE TO CLOSE RUNNING CLEARANCES OWNER/AGENT MUST ASSURE THAT HOISTWAY IS CONSTRUCTED PLUMB ($\pm 1/8$ IN.) AND SQUARE AND TO SIZE SHOWN.
 - C - PIT WATER PROOFING OR SUMP AS REQUIRED. PIT FLOOR DESIGNED FOR REACTION SHOWN.
 - D - NO CONDUIT, WIRING OR PIPING OTHER THAN THAT PERTAINING TO THE LIFT EQUIP. IS PERMITTED IN THE HOISTWAY
- STRUCTURAL ENGINEER TO ASSURE THAT BUILDING AND SHAFT WILL SUPPORT ALL LOADS IMPOSED BY THE LIFT EQUIPMENT.
- F - ELECTRICAL EQUIPMENT AND WIRING TO COMPLY WITH SECTION 38 OF CSA C22.1. ARTICLE B20 OF NATIONAL ELECTRIC CODE ANSI/NFPA 70
 - 1) FUSED DISCONNECT WITH AUXILIARY CONTACT ON MAIN POWER SUPPLY. PROVIDE TWO 18 AWG CONDUCTORS BETWEEN CONTACT AND CONTROLLER.
 - 3) LIGHTING WITH SWITCH AND ELECTRICAL GFCI OUTLET IN HOISTWAY PIT.
 - 4) BRANCH CIRCUIT WITH DISCONNECT FOR DOOR OPERATORS (IF EQUIPPED).
 - 5) BRANCH CIRCUIT WITH DISCONNECT FOR VENTILATION SYSTEM (IF EQUIPPED).

ELECTRICAL DATA				
	AMPERAGE	VOLTAGE	PHASE	REQUIRED
POWER SUPPLY	20	120	1	1
HYDRAULIC DATA				
MOTOR:	1.5 H.P.	PLUNGER - $\pm 1.5"$	THK: FULL	
SYSTEM MAX. PRES.:	2000 PSI	CYLINDER	# 2"	THK 0.125"
FLOW:	1.48 GPM	CHAIN	# 50	QTY 2
OIL CAP.:	1.25 GAL	PULLEYS:	TEE	P.D.
WEIGHT/PLUNGER:	2125 LBS			
GENERAL DATA				
CAPACITY:	750 LB	SPEED:	UP: 25 ft/m DOWN: 25ft/m	
LANDING:	2	OPENINGS:	ON/OFF SAME SIDE	
TRAVEL:	X"	PIT DEPTH:	3"	
PROJECT:				
MODEL: V1504P	QTY.:	1		
TOLERANCES IF NOT SPECIFIED				
DEC: ----	ANG: ----			
SCALE:	DRAWN BY:	NO.	REVISIONS	DATE
NTS	XXX			
MATERIAL:	DATE:			
----	AA/MM/yy			
DRAWING #	REV#	PAGE:		
----	0	1/2		

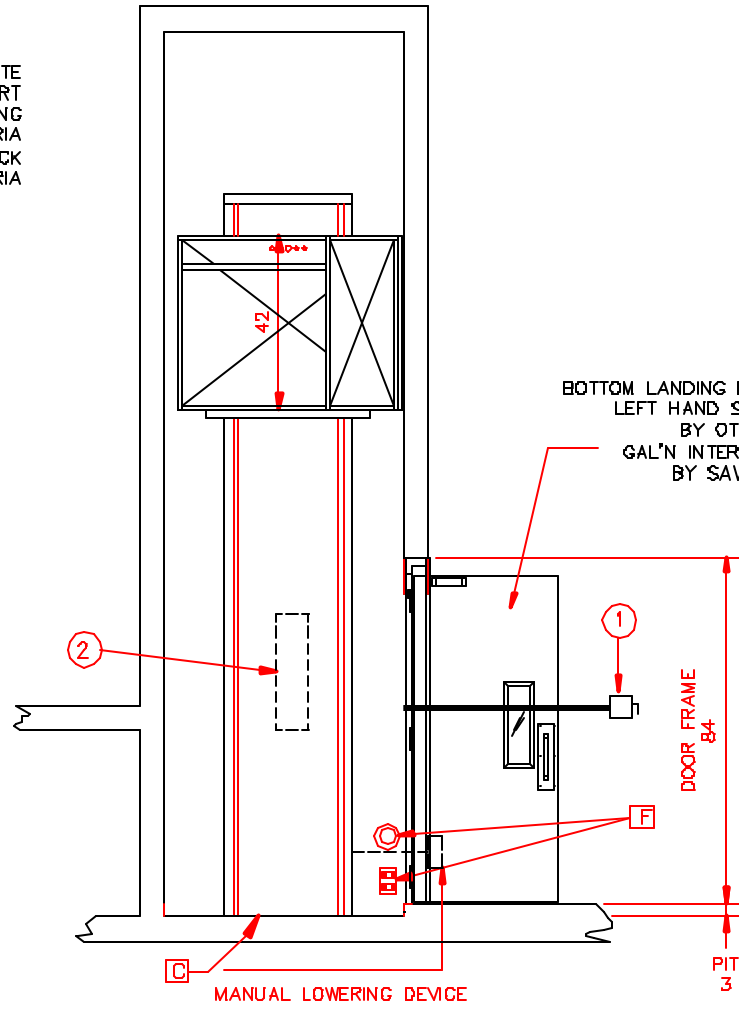
SERVICES INDUSTRIELS SAVARIA INC.

TITLE: LIFT FOR HANDICAPPED



ELEVATOR'S RUNWAY - FRONT VIEW-SECOND FLOOR

TOP LANDING GATE
STEEL INSERT
LEFT HAND SWING
BY SAVARIA
GAL'N INTERLOCK
BY SAVARIA



ELEVATOR'S RUNWAY - SIDE VIEW

BOTTOM LANDING DOOR
LEFT HAND SWING
BY OTHERS
GAL'N INTERLOCK
BY SAVARIA

MANUAL LOWERING DEVICE

INSTALLER:

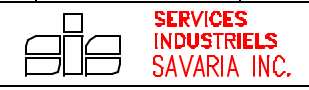
RAIL FORCES GENERATED BY PLATFORM LOADS ONLY

R1: 472 LBS
R2: 260 LBS
PIT LOADING:
R3: 3200 LBS

- PROVISIONS BY OTHERS**
- A - HOISTWAY IN ACCORDANCE WITH ELEVATOR/LIFT SAFETY CODES (U.S.-ASME A17.1 PART XX / CAN.-CSA B355-94) AND TO LOCAL CODES AND REGULATIONS. HOISTWAY TO BE FIRE RATED IN ACCORDANCE WITH APPLICABLE BUILDING CODES IF REQUIRED BY SUCH CODES.
 - B - PLUMB HOISTWAY DUE TO CLOSE RUNNING CLEARANCES OWNER/AGENT MUST ASSURE THAT HOISTWAY IS CONSTRUCTED PLUMB AND SQUARE AND TO SIZE SHOWN.
 - C - PIT WATER PROOFING OR SUMP AS REQUIRED. PIT FLOOR DESIGNED FOR REACTION SHOWN. BACKFILLING OF PIT BORE-HOLES WHERE APPLICABLE.
 - D - NO CONDUIT, WIRING OR PIPING OTHER THAN THAT PERTAINING TO THE LIFT EQUIP. IS PERMITTED IN THE HOISTWAY OR MEC. RM
 - E - ADEQUATE SUPPORT FOR GUIDE RAIL FASTENINGS, ETC. BUILDING STRUCTURAL ENGINEER TO ASSURE THAT BUILDING AND SHAFT WILL SUPPORT ALL LOADS IMPOSED BY THE LIFT EQUIPMENT.
 - F - LIGHTS, SWITCHES & ELECTRICAL OUTLET REQUIRED IN THE HOISTWAY.

- GENERAL SPECIFICATIONS:**
- 1 INSTALL A LOCKABLE FUSE DISCONNECT C/W AUXILIARY CONTACT FOR BATTERY TO ISOLATE THE ELECTRIC CONTROLLER BY OTHERS
 - 2 ELECTRIC SYSTEM CONFORMS TO ASME(AS1735.15) A17.5-1996 CAN/CSA B44.1-M96.
BEIGE COLOR STANDARD, INDOOR APPLICATION.
HYDRAULIC PUMP 110VAC OPERATION.
(110 VAC UP/12 VDC DOWN)

ELECTRICAL DATA				
	AMPERAGE	VOLTAGE	PHASE	REQUIRED
POWER SUPPLY	-	120V	60 Hz	1
HYDRAULIC DATA				
MOTOR:	1.5 Hp	PLUNGER - 1.5" THK: FULL		
SYSTEM MAX. PRES.:	2000 PSI	CYLINDER #	2.0"	THK 0.125"
FLOW:	1.15 GPM	CHAIN #	50	QTY 2
OIL CAP.:	2.0 GAL	PULLEYS:	TEE	P.D.
WEIGHT/PLUNGER: 2125 LBS				
GENERAL DATA				
CAPACITY:	750 LB	SPEED:	UP: 25 ft/m DOWN: 25 ft/m	
LANDING:	2	OPENINGS:	R90°	
TRAVEL:	"a"	PIT DEPTH:	3"	
PROJECT:				
MODEL: V-1504P QTY.: 12				
TOLERANCES IF NOT SPECIFIED				
DEC: 0.030"		ANG: 0.05"		0 FOR REFERENCE
SCALE:	NTS	DRAWN BY:	A. BOUCHARD	
MATERIAL:	---	DATE:	08-16-2002	
DRAWING #	---	REV#	2	PAGE: 1



TITLE: PLATFORM-LIFT

GENERAL SPECIFICATIONS:

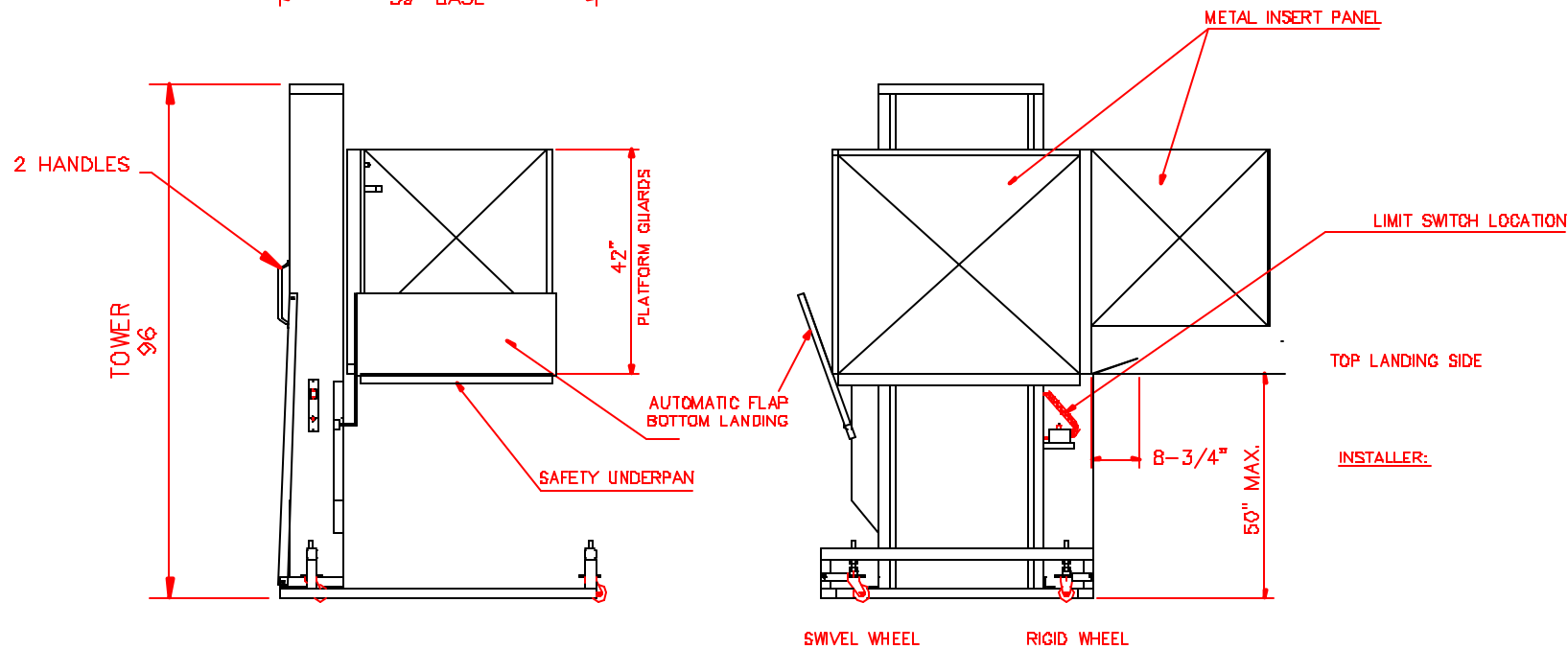
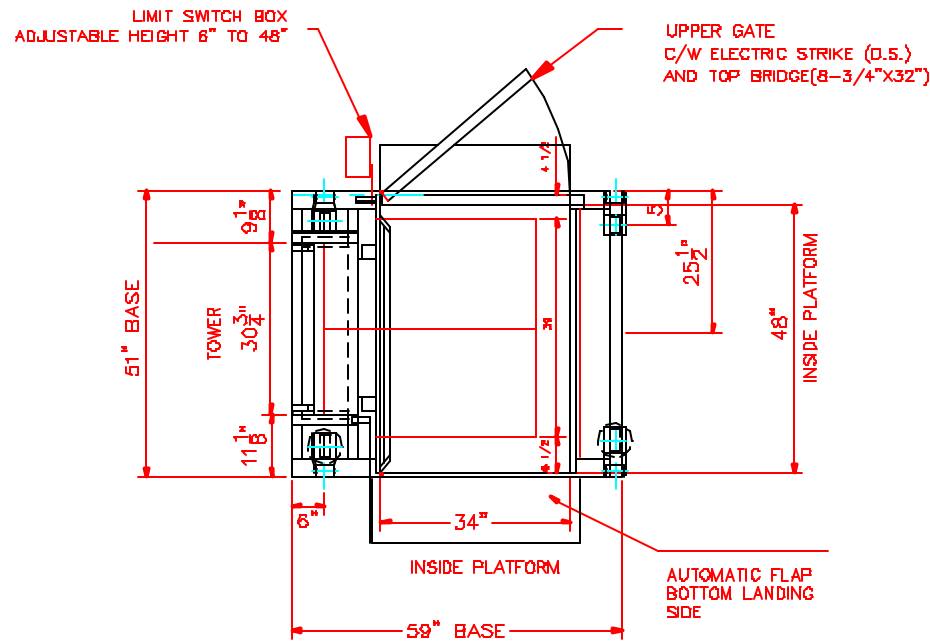
- ① INSTALL A LOCKABLE FUSE DISCONNECT C/W AUXILIARY CONTACT FOR BATTERY TO ISOLATE THE ELECTRIC CONTROLLER BY OTHERS
- ② ELECTRIC SYSTEM CONFORMS TO ASME A17.5-1996 CAN/CSA B44.1-M96.
- ③ BEIGE COLOR , INDOOR APPLICATION, HYDRAULIC PUMP 12 VDC OPERATION (12 VDC UP / 12 VDC DOWN)

PROVISIONS BY OTHERS

- A - HOISTWAY IN ACCORDANCE WITH ELEVATOR/LIFT SAFETY CODES (U.S.-ASME A17.1 PART XX / CAN.-CSA B355-00) AND TO LOCAL CODES AND REGULATIONS. HOISTWAY TO BE FIRE RATED IN ACCORDANCE WITH APPLICABLE BUILDING CODES IF REQUIRED BY SUCH CODES.
- B - PLUMB HOISTWAY DUE TO CLOSE RUNNING CLEARANCES OWNER/AGENT MUST ASSURE THAT HOISTWAY IS CONSTRUCTED PLUMB AND SQUARE AND TO SIZE SHOWN.
- C - PIT WATER PROOFING OR SUMP AS REQUIRED. PIT FLOOR DESIGNED FOR REACTION SHOWN. BACKFILLING OF PIT BORE-HOLES WHERE APPLICABLE.
- D - NO CONDUCT, WIRING OR PIPING OTHER THAN THAT PERTAINING TO THE LIFT EQUIP. IS PERMITTED IN THE HOISTWAY
- E - ADEQUATE SUPPORT FOR GUIDE RAIL FASTENINGS, ETC. BUILDING STRUCTURAL ENGINEER TO ASSURE THAT BUILDING AND SHAFT WILL SUPPORT ALL LOADS IMPOSED BY THE LIFT EQUIPMENT.
- F - LIGHTS, SWITCHES & ELECTRICAL OUTLET REQUIRED IN THE HOISTWAY.

TOTAL TRAVEL: 50"
TOWER HEIGHT: 96"

IMPORTANT NOTICE:
UNIT TO BE LOWERED ON THE GROUND BEFORE USE



ELECTRICAL DATA				
	AMPERAGE	VOLTAGE	PHASE	REQUIRED
POWER SUPPLY	20	120	1	1
HYDRAULIC DATA				
MOTOR: 1.5 H.P.	PLUNGER - #: 1.5" THK: FULL			
SYSTEM MAX. PRES.: 2000 PSI	CYLINDER	Ø 2.0"	THK 0.125"	
FLOW: 1.48 GPM	CHAIN	# 50	QTY 2	
OIL CAP.: 1.25 GAL	SPROCKETS:	TEE	P.D.	
WEIGHT/PLUNGER: 2125 LBS				
GENERAL DATA				
CAPACITY: 750 LB	SPEED: UP: 25 ft/m DOWN: 25 ft/m			
LANDING: 2	OPENINGS: FRONT/BACK			
TRAVEL: 48"	PIT DEPTH: 0"			
PROJECT:				
MODEL: V1504P QTY.:1				
TOLERANCES IF NOT SPECIFIED				
DEC: ---- ANG: ----				
SCALE:	DRAWN BY:	NO.	REVISIONS	DATE
----	A. BOUCHARD			
MATERIAL:	DATE:			
----	SEPT 24 02			
DRAWING #	REV#	PAGE:	TITLE:	
9281-1	0	1/2	LIFT FOR HANDICAPPED	