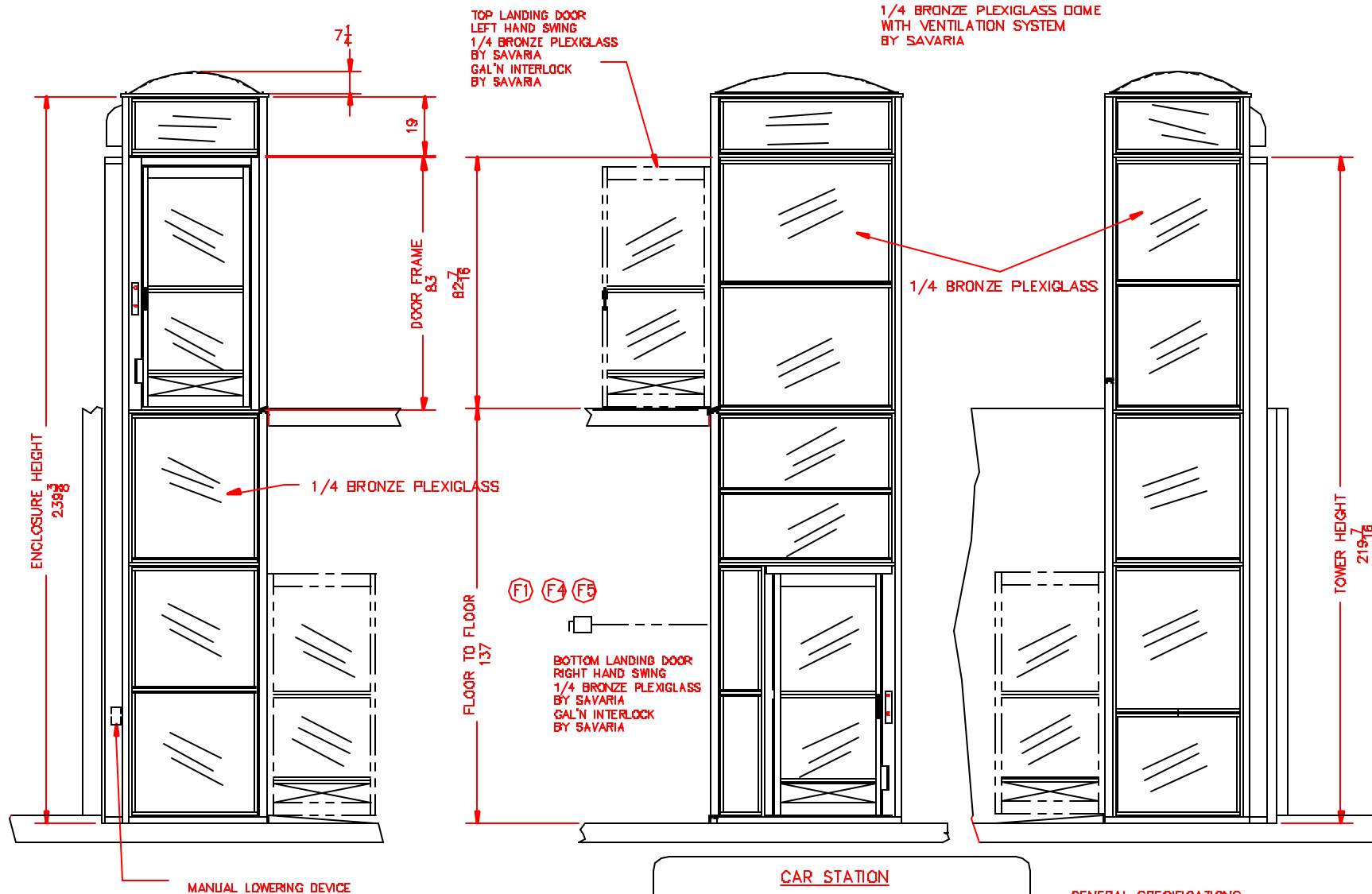
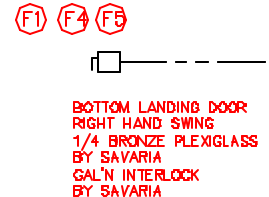


V-1504 PE - 90° LOWER ENTRY - LEFT UPPER EXIT



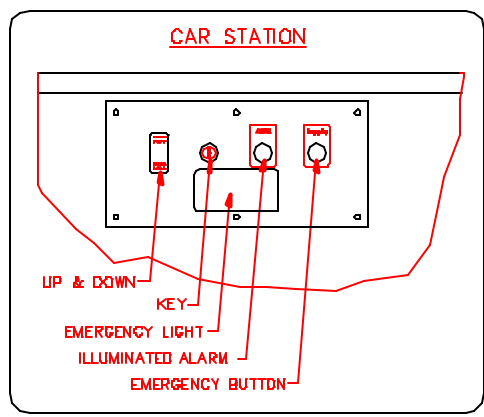
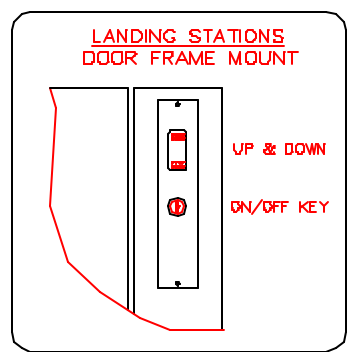
PROVISIONS BY OTHERS

- A - HOISTWAY IN ACCORDANCE WITH ELEVATOR/LIFT SAFETY CODES (U.S.-ASME A17.1 PART XX / CAN.-CSA B355-84) AND TO LOCAL CODES AND REGULATIONS. HOISTWAY TO BE FIRE RATED IN ACCORDANCE WITH APPLICABLE BUILDING CODES IF REQUIRED BY SUCH CODES.
 - B - PLUMB HOISTWAY DUE TO CLOSE RUNNING CLEARANCES OWNER/AGENT MUST ASSURE THAT HOISTWAY IS CONSTRUCTED PLUMB ($\pm 1/8$ IN.) AND SQUARE AND TO SIZE SHOWN.
 - C - PIT WATER PROOFING OR SLUMP AS REQUIRED. PIT FLOOR DESIGNED FOR REACTION SHOWN.
 - D - NO CONDUCT, WIRING OR PIPING OTHER THAN THAT PERTAINING TO THE LIFT EQUIP. IS PERMITTED IN THE HOISTWAY
- STRUCTURAL ENGINEER TO ASSURE THAT BUILDING AND SHAFT WILL SUPPORT ALL LOADS IMPOSED BY THE LIFT EQUIPMENT.
- F - ELECTRICAL EQUIPMENT AND WIRING TO COMPLY WITH SECTION 38 OF CSA C22.1. ARTICLE 620 OF NATIONAL ELECTRIC CODE ANSI/NFPA 70
 - 1) FUSED DISCONNECT WITH AUXILIARY CONTACT ON MAIN POWER SUPPLY. PROVIDE TWO 18 AWG CONDUCTORS BETWEEN CONTACT AND CONTROLLER.
 - 3) LIGHTING WITH SWITCH AND ELECTRICAL GFCI OUTLET IN HOISTWAY PIT.
 - 4) BRANCH CIRCUIT WITH DISCONNECT FOR DOOR OPERATORS (IF EQUIPPED).
 - 5) BRANCH CIRCUIT WITH DISCONNECT FOR VENTILATION SYSTEM (IF EQUIPPED).

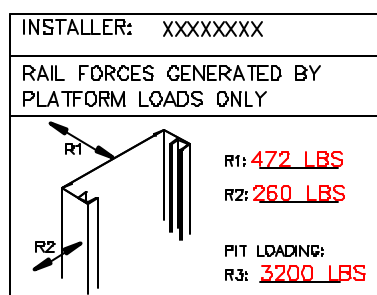


MANUAL LOWERING DEVICE

LOAD BEARING WALL TO SUPPORT ALL LOADS

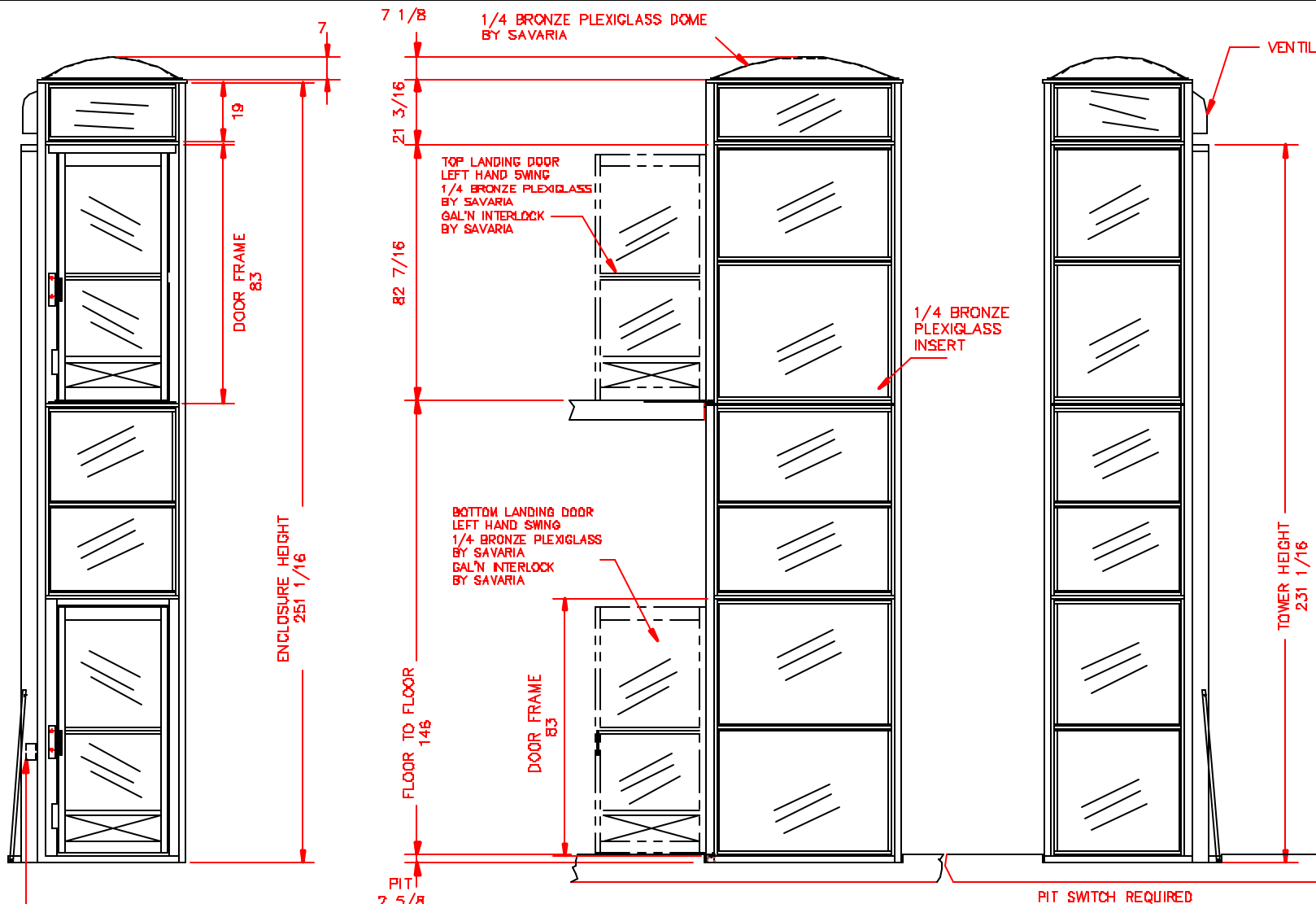


- GENERAL SPECIFICATIONS:
- 1) COLOR BEIGE STANDARD FOR INDOOR APPLICATION
 - 2) HYDRAULIC PUMP 110 VAC OPERATION (110 VAC UP/12 VDC DOWN)



ELECTRICAL DATA				
	AMPERAGE	VOLTAGE	PHASE	REQUIRED
POWER SUPPLY	20	120	1	1
HYDRAULIC DATA				
MOTOR: 1.5 Hp	PLUNGER - $\varnothing 1.5$ " THK: FULL			
SYSTEM MAX. PRES.: 2000 PSI	CYLINDER	\varnothing 2.0"	THK 0.125"	
FLOW: 1.15 GPM	CHAIN	# 50	QTY 2	
DL CAP.: 1.25 GAL	PULLEYS:	TEE	P.D.	
WEIGHT/PLUNGER: 2125 LBS				
GENERAL DATA				
CAPACITY: 750 LB	SPEED: UP: 25 ft/m DOWN: 25 ft/m			
LANDING: 2	OPENINGS: 90-LEFT			
TRAVEL: 137"	PIT DEPTH: 2-5/8" RAMP			
PROJECT: XXXXXXXX				
MODEL: V1504-PE QTY.:1				
TOLERANCES IF NOT SPECIFIED				
DEC: ---	ANG: ---	0	FOR APPROVAL	08/11/30
SCALE: NTS	DRAWN BY: A.BOUCHARD	NO.	REVISIONS	
MATERIAL: ---	DATE: MAY 23 2002	SERVICES INDUSTRIELS SAVARIA INC.		
DRAWING # 8232-1	REV# 1	PAGE: 1/2	TITLE: LIFT FOR HANDICAPPED	

V-1504 PE - LEFT LOWER ENTRY - LEFT UPPER EXIT



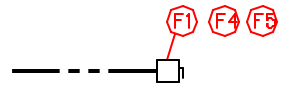
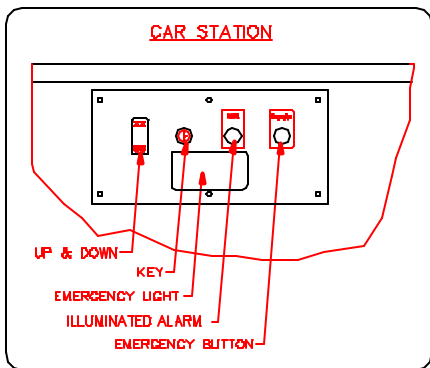
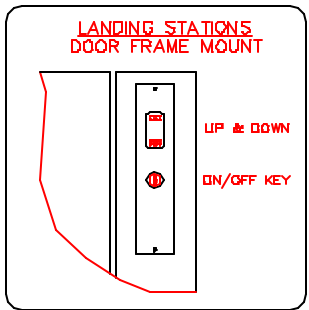
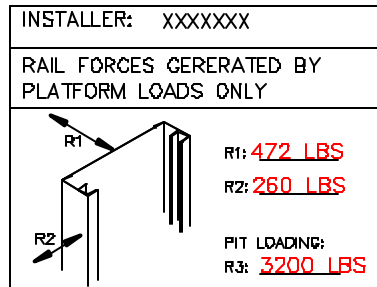
PROVISIONS BY OTHERS

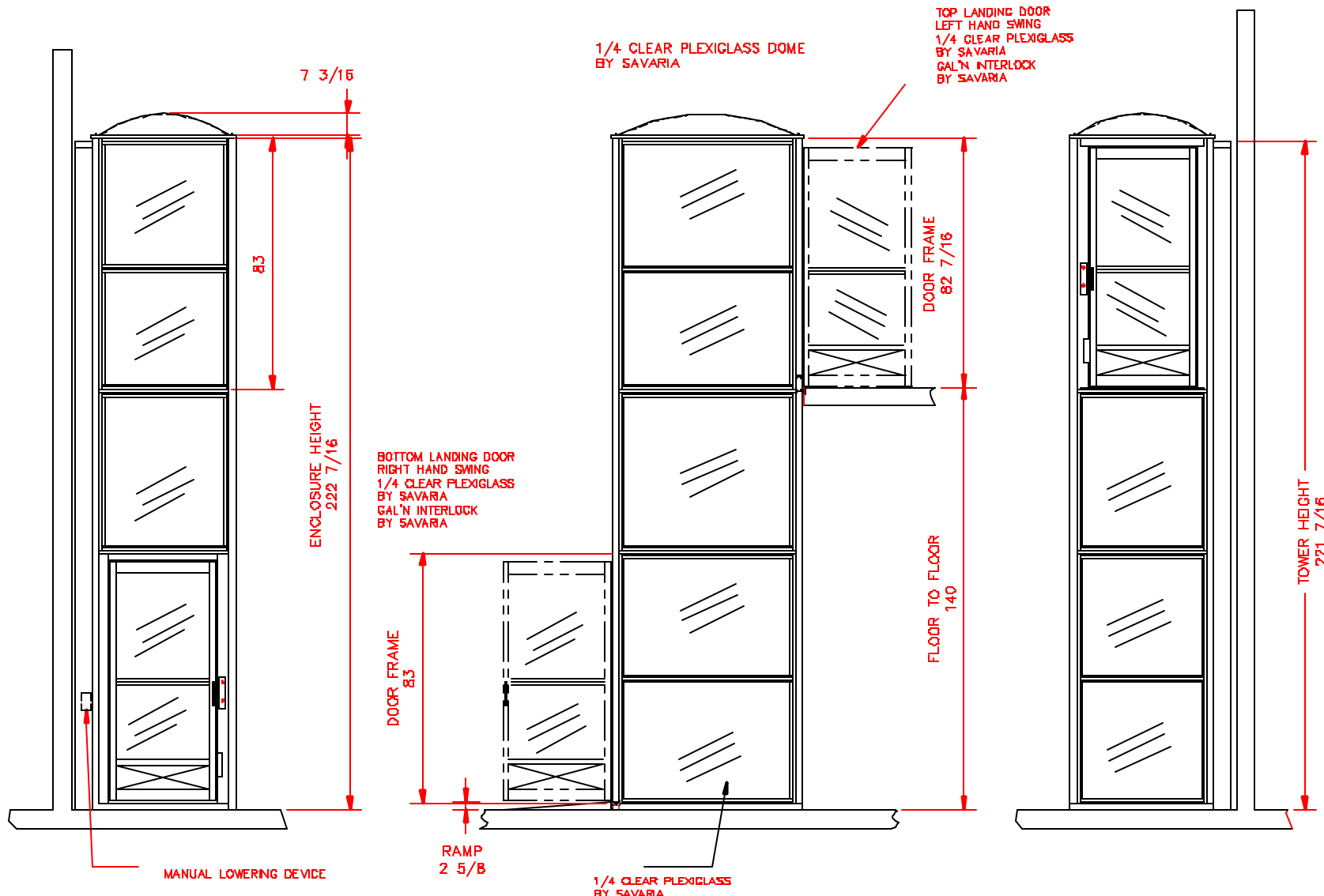
- A - HOISTWAY IN ACCORDANCE WITH ELEVATOR/LIFT SAFETY CODES (U.S.-ASME A17.1 PART XX / CAN.-CSA B335-84) AND TO LOCAL CODES AND REGULATIONS. HOISTWAY TO BE FIRE RATED IN ACCORDANCE WITH APPLICABLE BUILDING CODES IF REQUIRED BY SUCH CODES.
 - B - PLUMB HOISTWAY DUE TO CLOSE RUNNING CLEARANCES OWNER/AGENT MUST ASSURE THAT HOISTWAY IS CONSTRUCTED PLUMB ($\pm 1/8$ IN.) AND SQUARE AND TO SIZE SHOWN.
 - C - PIT WATER PROOFING OR SUMP AS REQUIRED. PIT FLOOR DESIGNED FOR REACTION SHOWN.
 - D - NO CONDUIT, WIRING OR PIPING OTHER THAN THAT PERTAINING TO THE LIFT EQUIP. IS PERMITTED IN THE HOISTWAY.
- STRUCTURAL ENGINEER TO ASSURE THAT BUILDING AND SHAFT WILL SUPPORT ALL LOADS IMPOSED BY THE LIFT EQUIPMENT.
- F - ELECTRICAL EQUIPMENT AND WIRING TO COMPLY WITH SECTION 38 OF CSA C22.1. ARTICLE 620 OF NATIONAL ELECTRIC CODE ANSI/NFPA 70
 - 1) FUSED DISCONNECT WITH AUXILIARY CONTACT ON MAIN POWER SUPPLY. PROVIDE TWO 18 AWG CONDUCTORS BETWEEN CONTACT AND CONTROLLER.
 - 3) LIGHTING WITH SWITCH AND ELECTRICAL GFCI OUTLET IN HOISTWAY PIT.
 - 4) BRANCH CIRCUIT WITH DISCONNECT FOR DOOR OPERATORS (IF EQUIPPED).
 - 5) BRANCH CIRCUIT WITH DISCONNECT FOR VENTILATION SYSTEM (IF EQUIPPED).

ELECTRICAL DATA				
	AMPERAGE	VOLTAGE	PHASE	REQUIRED
POWER SUPPLY	20	120	1	1
HYDRAULIC DATA				
MOTOR: 1.5 Hp	PLUNGER - *2" THK: FULL			
SYSTEM MAX. PRES.: 2000 PSI	CYLINDER	ϕ 2.5"	THK 0.125"	
FLOW: 1.15 GPM	CHAIN	# 50	QTY 2	
DL CAP.: 1.25 GAL	PULLEYS:	TEE	P.D.	
WEIGHT/PLUNGER: 2125 LBS				
GENERAL DATA				
CAPACITY: 750 LB	SPEED: UP: 14 ft/m DOWN: 14 ft/m			
LANDING: 2	OPENINGS: LEFT			
TRAVEL: 146"	PIT DEPTH: 2-5/8"			
PROJECT: XXXXXXXX				
MODEL: V1504-PE QTY.:1				
TOLERANCES IF NOT SPECIFIED				
DEC: ---	ANG: ---		0	FOR APPROVAL 08/11/00
SCALE: NTS	DRAWN BY: A.BOUCHARD		NO.	REVISIONS
MATERIAL: ---	DATE: NOV 15 2002		SERVICES INDUSTRIELS SAVARIA INC.	
DRAWING # XXXX-1	REV# 1	PAGE: 1/2	TITLE: LIFT FOR HANDICAPPED	

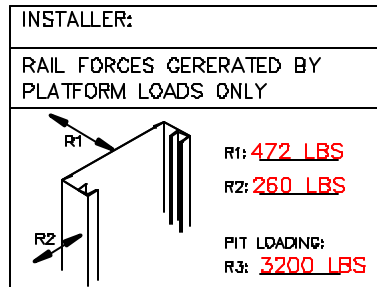
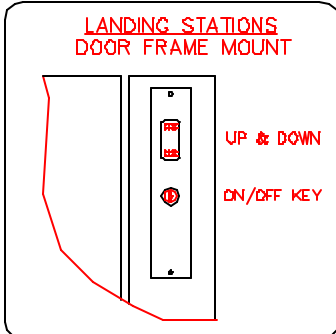
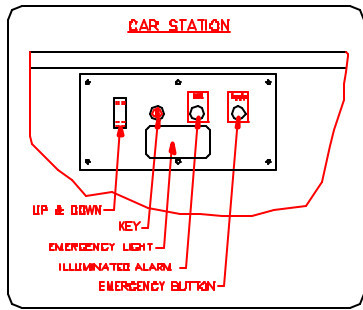
- PIT SWITCH REQUIRED
- GENERAL SPECIFICATIONS:
- 1) COLOR BEIGE STANDARD FOR INDOOR APPLICATION
 - 2) HYDRAULIC PUMP 110 VAC OPERATION (110 VAC UP/12 VDC DOWN)

a	b
48"	103"
60"	115"
72"	127"
86"	151"
108"	163"
120"	175"
144"	199"
168"	223"





TOWER HAVE TO BE SUPPORT AT TOP LANDING WITH A TRIANGULAR BRACKET



PROVISIONS BY OTHERS

- A - HOISTWAY AND MACHINE ROOM IN ACCORDANCE WITH ELEVATOR/LIFT SAFETY CODES (CAN/CSA-B355-M84) AND TO LOCAL CODES AND REGULATIONS.
- B - PLUMB HOISTWAY DUE TO CLOSE RUNNING CLEARANCES OWNER/AGENT MUST ASSURE THAT HOISTWAY IS CONSTRUCTED PLUMB AND SQUARE AND TO SIZE SHOWN.
- C - PIT WATER PROOFING OR SUMP AS REQUIRED. PIT FLOOR DESIGNED FOR REACTION SHOWN. BACKFILLING OF PIT BORE-HOLES WHERE APPLICABLE.
- D - NO CONDUCT, WIRING OR PIPING OTHER THAN THAT PERTAINING TO THE LIFT EQUIP. IS PERMITTED IN THE HOISTWAY OR MEC. RM.
- E - ADEQUATE SUPPORT FOR GUIDE RAIL FASTENINGS, ETC. BUILDING STRUCTURAL ENGINEER TO ASSURE THAT BUILDING AND SHAFT WILL SUPPORT ALL LOADS IMPOSED BY THE LIFT EQUIPMENT.
- F - LIGHTS, SWITCHES & ELECTRICAL OUTLET REQUIRED IN THE HOISTWAY.

GENERAL SPECIFICATIONS:

1. INSTALL A LOCKABLE FUSE DISCONNECT C/W AUXILIARY CONTACT FOR BATTERY TO ISOLATE THE ELECTRIC CONTROLLER BY OTHERS
2. ELECTRIC SYSTEM CONFORMS TO ASME A17.5-1996 CAN/CSA B44.1-M96. BEIGE COLOR, INDOOR APPLICATION.

HYDRAULIC PUMP 115 VAC OPERATION (110 VAC UP / 12 VDC DOWN)

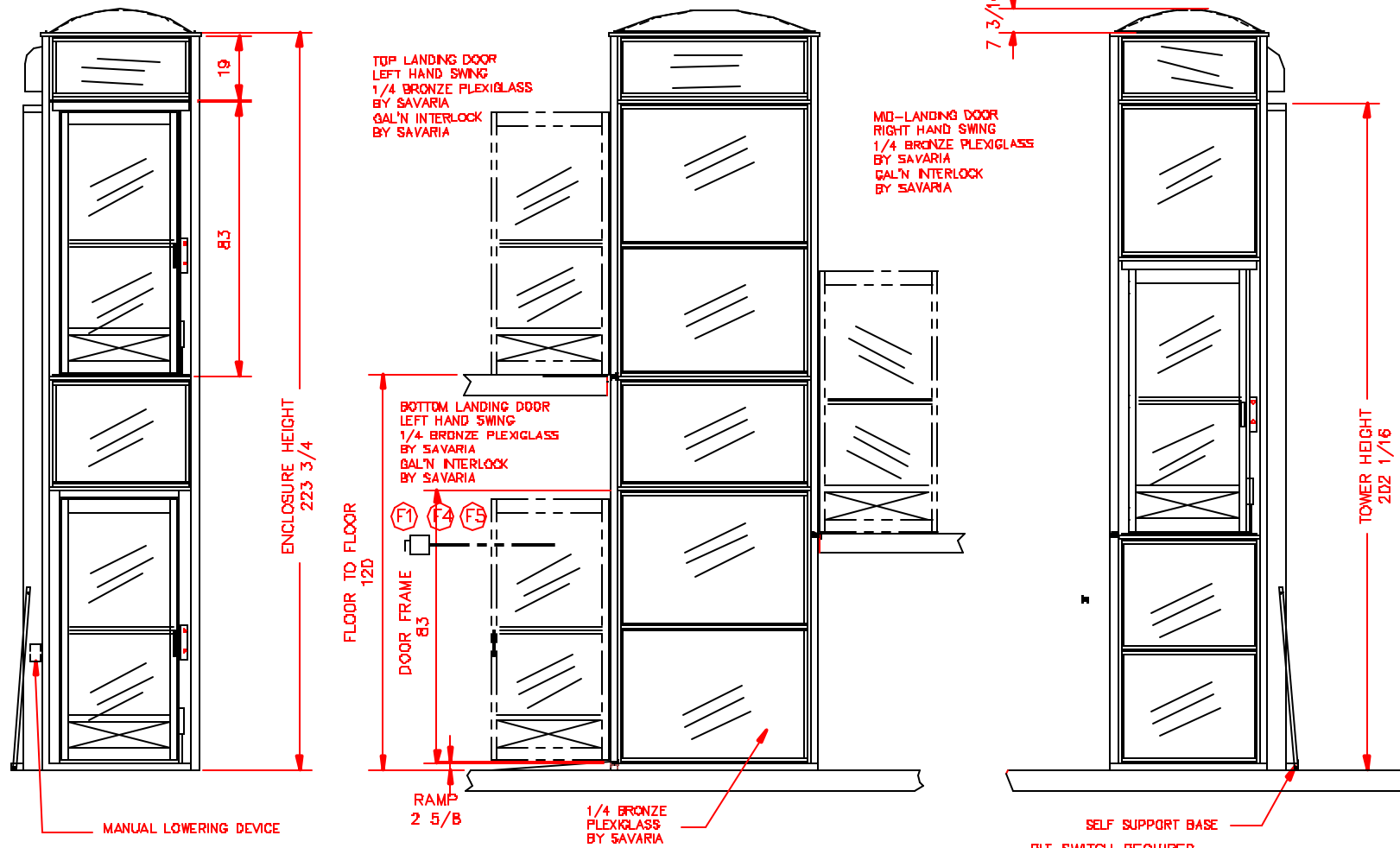
ELECTRICAL DATA				
	AMPERAGE	VOLTAGE	PHASE	REQUIRED
POWER SUPPLY	20	120	1	1
HYDRAULIC DATA				
MOTOR: 1.5 Hp	PLUNGER - #1 1/2" THK: FULL			
SYSTEM MAX. PRES.: 2000 PSI	CYLINDER	Ø 2"	THK 0.125"	
FLOW: 1.15 GPM	CHAIN	# 50	QTY 2	
DL CAP.: 1.25 GAL	PULLEYS:	TEE	P.D.	
WEIGHT/PLUNGER: 2125 LBS				
GENERAL DATA				
CAPACITY: 750 LB	SPEED: UP: 25 ft/m DOWN: 25 ft/m			
LANDING: 2	OPENINGS: FRONT/BACK			
TRAVEL: 140"	PIT DEPTH: 2-5/8" RAMP			
PROJECT:				
MODEL: V1504-PE QTY.: 1				
TOLERANCES IF NOT SPECIFIED				
DEC: ---	ANG: ---		for reference	
SCALE: NTS	DRAWN BY: A. BOUCHARD		NO.	REVISIONS
MATERIAL: ---	DATE: NOV 14 2002		DATE	
DRAWING # 9746-1	REV# 1	PAGE: 1/2	TITLE: LIFT FOR HANDICAPPED	



V-1504 PE - LEFT LOWER ENTRY - RIGHT MID-EXIT - LEFT UPPER EXIT

LOAD BEARING WALL TO SUPPORT ALL LOADS

1/4 BRONZE PLEXIGLASS DOME WITH VENTILATION SYSTEM BY SAVARIA



PROVISIONS BY OTHERS

- A - HOISTWAY IN ACCORDANCE WITH ELEVATOR/LIFT SAFETY CODES (U.S.-ASME A17.1 PART XX / CAN.-CSA B355-84) AND TO LOCAL CODES AND REGULATIONS. HOISTWAY TO BE FIRE RATED IN ACCORDANCE WITH APPLICABLE BUILDING CODES IF REQUIRED BY SUCH CODES.
 - B - PLUMB HOISTWAY DUE TO CLOSE RUNNING CLEARANCES OWNER/AGENT MUST ASSURE THAT HOISTWAY IS CONSTRUCTED PLUMB ($\pm 1/8$ IN.) AND SQUARE AND TO SIZE SHOWN.
 - C - PIT WATER PROOFING OR SUMP AS REQUIRED. PIT FLOOR DESIGNED FOR REACTION SHOWN.
 - D - NO CONDUIT, WIRING OR PIPING OTHER THAN THAT PERTAINING TO THE LIFT EQUIP. IS PERMITTED IN THE HOISTWAY
- STRUCTURAL ENGINEER TO ASSURE THAT BUILDING AND SHAFT WILL SUPPORT ALL LOADS IMPOSED BY THE LIFT EQUIPMENT.
- F - ELECTRICAL EQUIPMENT AND WIRING TO COMPLY WITH SECTION 38 OF CSA C22.1. ARTICLE 620 OF NATIONAL ELECTRIC CODE ANSI/NFPA 70
 - 1) FUSED DISCONNECT WITH AUXILIARY CONTACT ON MAIN POWER SUPPLY; PROVIDE TWO 18 AWG CONDUCTORS BETWEEN CONTACT AND CONTROLLER.
 - 3) LIGHTING WITH SWITCH AND ELECTRICAL GFCI OUTLET IN HOISTWAY PIT.
 - 4) BRANCH CIRCUIT WITH DISCONNECT FOR DOOR OPERATORS (IF EQUIPPED).
 - 5) BRANCH CIRCUIT WITH DISCONNECT FOR VENTILATION SYSTEM (IF EQUIPPED).

ELECTRICAL DATA

	AMPERAGE	VOLTAGE	PHASE	REQUIRED
POWER SUPPLY	20	120	1	1

HYDRAULIC DATA

MOTOR: 1.5 Hp	PLUNGER - #1 1/2" THK: FULL			
SYSTEM MAX. PRES.: 2000 PSI	CYLINDER	#	2"	THK: 0.125"
FLOW: 1.15 GPM	CHAIN	#	50	QTY: 2
DL CAP.: 1.25 GAL	PULLEYS:	TEE		P.D.

WEIGHT/PLUNGER: 2125 LBS

GENERAL DATA

CAPACITY: 750 LB	SPEED: UP: 25 ft/m DOWN: 25 ft/m
LANDING: 2	OPENINGS: FRONT/BACK
TRAVEL: 120"	PIT DEPTH: 2-5/8" RAMP

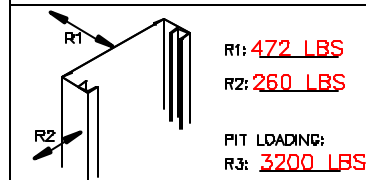
PROJECT: XXXXXXX

MODEL: V1504-PE	QTY.: 1
TOLERANCES IF NOT SPECIFIED	
DEC: ---	ANG: ---
SCALE: NTS	ANG: 0 FOR APPROVAL 08/11/00
DRAWN BY: A. BOUCHARD	NO. REVISIONS
MATERIAL: ---	DATE: JAN. 22 2001
DRAWING # XXXX-1	REV# 1 PAGE: 1/2
TITLE: LIFT FOR HANDICAPPED	

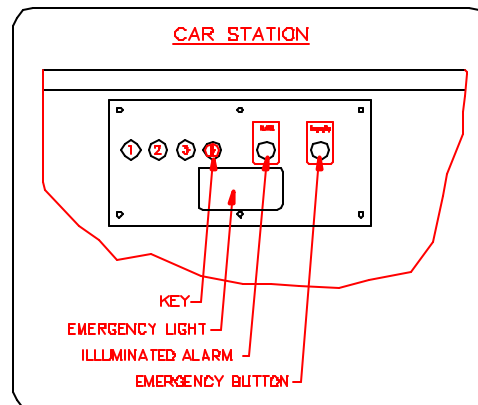
- GENERAL SPECIFICATIONS:
- 1) COLOR BEIGE STANDARD FOR INDOOR APPLICATION
 - 2) HYDRAULIC PUMP 110 VAC OPERATION (110 VAC UP/12 VDC DOWN)

INSTALLER:

RAIL FORCES GENERATED BY PLATFORM LOADS ONLY

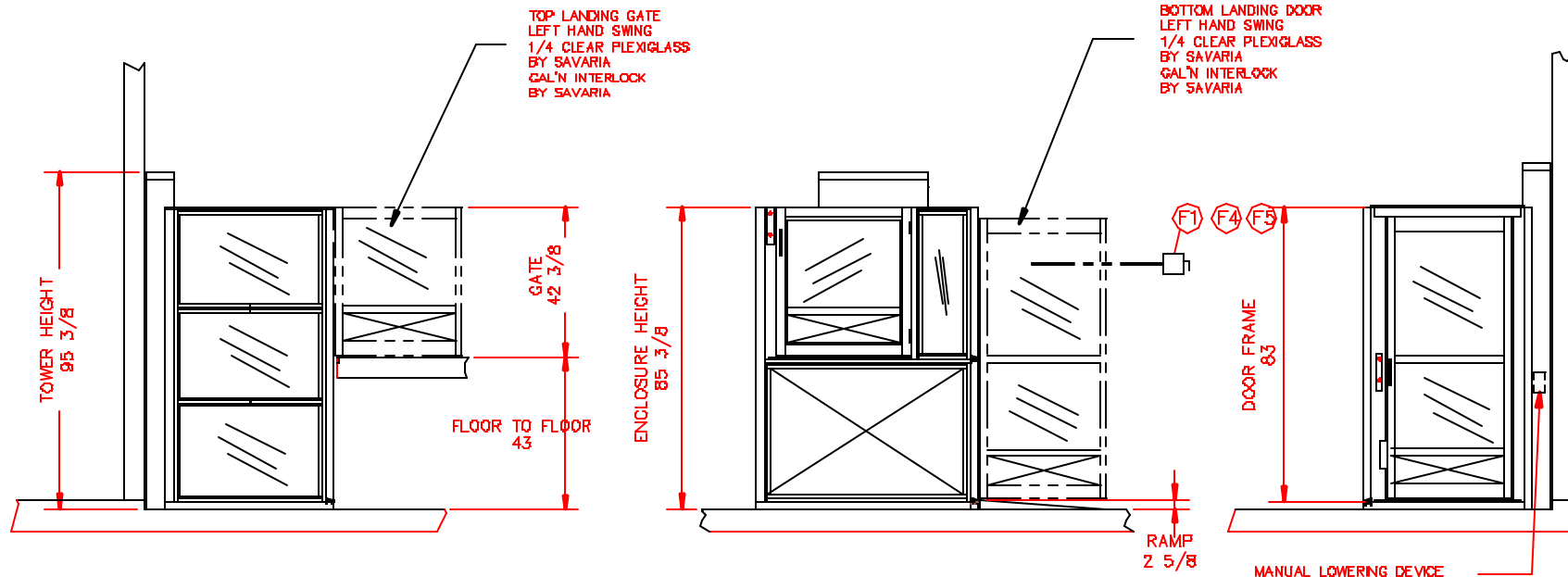


CAR STATION

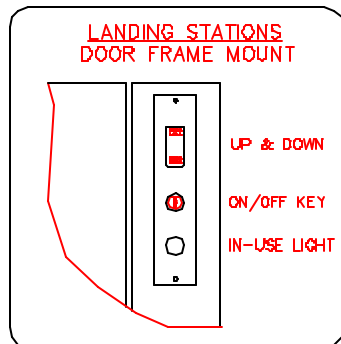
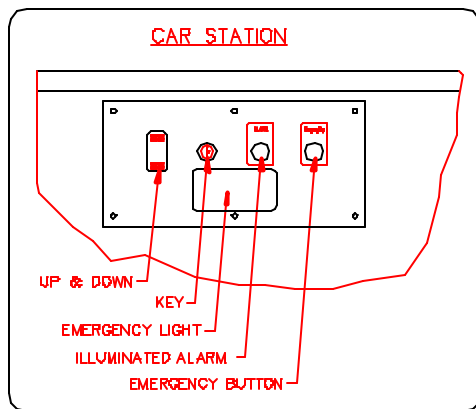


V-1504 PE - RIGHT LOWER ENTRY - 90° UPPER EXIT

a	b
48"	103"
60"	115"
72"	127"
96"	151"
108"	163"
120"	175"
144"	199"
168"	223"



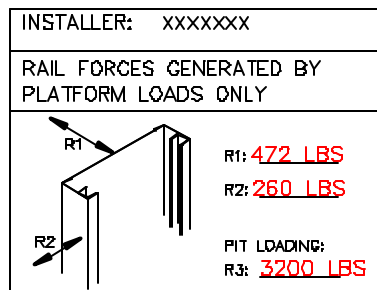
LOAD BEARING WALL
TO SUPPORT ALL LOADS



PIT SWITCH REQUIRED

GENERAL SPECIFICATIONS:

- COLOR BEIGE STANDARD FOR INDOOR APPLICATION
- HYDRAULIC PUMP 110 VAC OPERATION (110 VAC UP/12 VDC DOWN)



- PROVISIONS BY OTHERS
- A - HOISTWAY IN ACCORDANCE WITH ELEVATOR/LIFT SAFETY CODES (U.S.-ASME A17.1 PART XX / CAN.-CSA B355-84) AND TO LOCAL CODES AND REGULATIONS. HOISTWAY TO BE FIRE RATED IN ACCORDANCE WITH APPLICABLE BUILDING CODES IF REQUIRED BY SUCH CODES.
 - B - PLUMB HOISTWAY DUE TO CLOSE RUNNING CLEARANCES OWNER/AGENT MUST ASSURE THAT HOISTWAY IS CONSTRUCTED PLUMB ($\pm 1/8$ IN.) AND SQUARE AND TO SIZE SHOWN.
 - C - PIT WATER PROOFING OR SLUMP AS REQUIRED. PIT FLOOR DESIGNED FOR REACTION SHOWN.
 - D - NO CONDUIT, WIRING OR PIPING OTHER THAN THAT PERTAINING TO THE LIFT EQUIP. IS PERMITTED IN THE HOISTWAY
- STRUCTURAL ENGINEER TO ASSURE THAT BUILDING AND SHAFT WILL SUPPORT ALL LOADS IMPOSED BY THE LIFT EQUIPMENT.
- F - ELECTRICAL EQUIPMENT AND WIRING TO COMPLY WITH SECTION 38 OF CSA C22.1. ARTICLE 620 OF NATIONAL ELECTRIC CODE ANSI/NFPA 70
 - FUSED DISCONNECT WITH AUXILIARY CONTACT ON MAIN POWER SUPPLY. PROVIDE TWO 1B AWG CONDUCTORS BETWEEN CONTACT AND CONTROLLER.
 - LIGHTING WITH SWITCH AND ELECTRICAL GFCI OUTLET IN HOISTWAY PIT.
 - BRANCH CIRCUIT WITH DISCONNECT FOR DOOR OPERATORS (IF EQUIPPED).
 - BRANCH CIRCUIT WITH DISCONNECT FOR VENTILATION SYSTEM (IF EQUIPPED).

ELECTRICAL DATA				
	AMPERAGE	VOLTAGE	PHASE	REQUIRED
POWER SUPPLY	20	120	1	1

HYDRAULIC DATA				
MOTOR: 1.5 Hp	PLUNGER - #1 1/2" THK: FULL			
SYSTEM MAX. PRES.: 2000 PSI	CYLINDER	#	2"	THK: 0.125"
FLOW: 1.15 GPM	CHAIN	#	50	QTY: 2
OIL CAP.: 1.25 GAL	SPROCKETS:	TEE	15	P.D.: 3.00"
WEIGHT/PLUNGER: 2125 LBS				

GENERAL DATA			
CAPACITY: 750 LB	SPEED: UP: 25 ft/m DOWN: 25 ft/m		
LANDING: 2	OPENINGS: R-90		
TRAVEL: 40-3/8"	PIT DEPTH: 2-5/8" RAMP		
PROJECT: XXXXXXXXX			
MODEL: V1504-PE		QTY.: 1	
TOLERANCES IF NOT SPECIFIED			
DEC: ---	ANG: ---	0	FOR APPROVAL 08/11/00
SCALE: NTS	DRAWN BY: A. BOUCHARD	NO.	REVISIONS
MATERIAL: ---	DATE: MAY 27 2002	SERVICES INDUSTRIELS SAVARIA INC.	
DRAWING # XXXX-1	REV# 1	PAGE: 1/2	TITLE: LIFT FOR HANDICAPPED